



Keeping Applications in Business™

Electronic Healthcare Systems Makes Room for More Clients



Electronic Healthcare Systems, Inc. (EHS), founded in 1995, is headquartered in Birmingham, Alabama. It develops and markets system solutions to physicians who are leading the way to clinical excellence and practice efficiency through automation. The company's core product, CareRevolution™, won first place honors at the TEPR (Towards Electronic Patient Records) Conference. TEPR awards recognize independent software vendors that best provide tangible benefits to health organizations, caregivers, health professionals and patients.

Performance of EHS servers has a direct correlation to the success of their business model. That's because sales of EHS ASP services are contingent upon how many applications their host servers can efficiently support.

Colin Durham, Director of Technical Services at EHS said, "Since we host our own ASP applications for our clients to use, the more users we can support, the more revenue we collect for each user subscription."

EHS selected and installed TScale for their Terminal Servers because:

- Speed—Within three days of unattended operation, optimization would be complete, and their server would handle more users and applications
- Performance—After optimization, their Terminal Servers would typically support 30% - 40% more users
- Convenience—TScale optimization lets them remove servers from one farm and deploy them elsewhere if the user population is not growing
- Volume—TScale optimization would free up valuable headroom in the server farm, preventing servers that failed during peak load times from impacting users

Would you like to Evaluate TScale Advanced?

If you would like to evaluate TScale Advanced and help your Terminal Server systems improve scalability the same way that Electronic Healthcare Systems has, email RTO at sales@rtosoft.com or call 678-987-4302.

Benefits of Implementing TScale

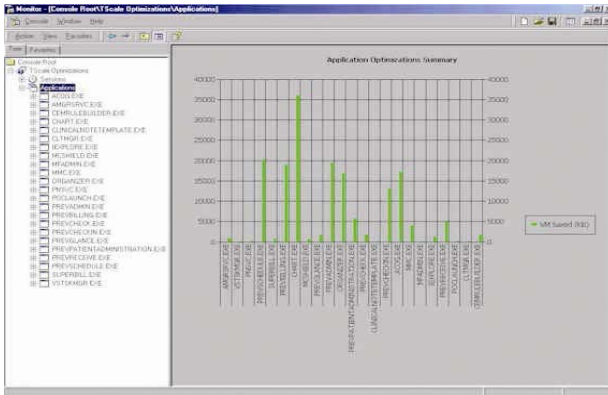
Implementation confirmed it was the right decision, and Durham was very clear about the impact TScale has made. “TScale has enabled us to increase the number of concurrent users supported on each of our servers from 35 to 60, a 71% increase,” he said. “Thanks to TScale, we have substantially increased the revenue we can collect on our existing farm of 20 servers.”

“Put another way,” Durham adds, “deploying TScale on our farm has allowed us to avoid purchasing another 13 servers—which has saved us more than \$182,000 in server hardware costs alone.”

The number of concurrent users per server *increased* from 35 to 60—with no degradation in performance. EHS found that TScale delivered significant benefits to their overall environment and to each individual application module. The virtual memory declined for:

- >Scheduling by 20MB per user
- >Administration by 19.5 MB per user session
- >Receivables by 4.9 MB per user
- >Organizer by 16.7 MB per user session
- >Billing by 18.8 MB per user
- >Patient Administration by 5.6 MB per user
- >ACOG by 17.2 MB per user
- >Chart by 35.8 MB per user
- >Check-in by 12.9 MB per user

This screen shot from the TScale Console depicts the virtual memory savings (in KB) for each of the major applications that are running on EHS’s servers.



Systems Environment

EHS manages a farm of 20 Citrix MetaFrame servers, on which their CareRevolution set of physician practice management applications are hosted for more than 50 customers using their Application Service Provider subscription model.